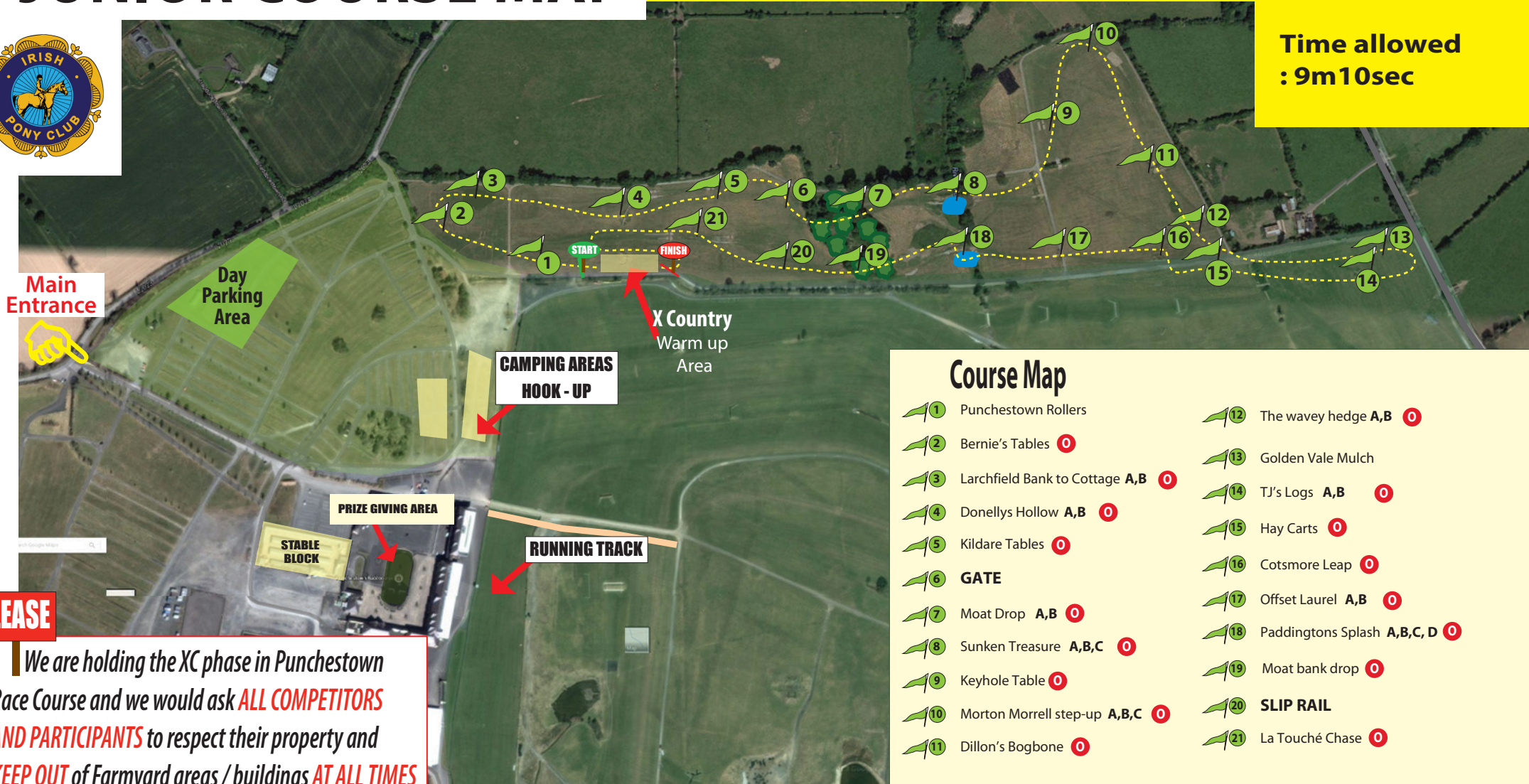


Defender- IPC National Tetrathlon Championships 2025

JUNIOR COURSE MAP

Time allowed
: 9m10sec



Course Map

- | | |
|------------------------------------|----------------------------------|
| 1 Punchestown Rollers | 12 The wavy hedge A,B 0 |
| 2 Bernie's Tables 0 | 13 Golden Vale Mulch |
| 3 Larchfield Bank to Cottage A,B 0 | 14 TJ's Logs A,B 0 |
| 4 Donellys Hollow A,B 0 | 15 Hay Carts 0 |
| 5 Kildare Tables 0 | 16 Cotsmore Leap 0 |
| 6 GATE | 17 Offset Laurel A,B 0 |
| 7 Moat Drop A,B 0 | 18 Paddingtons Splash A,B,C, D 0 |
| 8 Sunken Treasure A,B,C 0 | 19 Moat bank drop 0 |
| 9 Keyhole Table 0 | 20 SLIP RAIL |
| 10 Morton Morrell step-up A,B,C 0 | 21 La Touché Chase 0 |
| 11 Dillon's Bogbone 0 | |

PLEASE

We are holding the XC phase in Punchestown Race Course and we would ask **ALL COMPETITORS AND PARTICIPANTS** to respect their property and **KEEP OUT** of Farmyard areas / buildings **AT ALL TIMES**

ALL COMPETITORS ARE ADVISED TO WALK THE COURSE IN ADVANCE OF COMPETITION.

OPTIONAL FENCES 0 'O' Option available at fence.

COURSE MAP: Course may be subject to change following final course safety inspection.